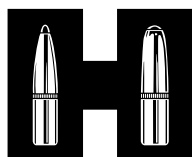
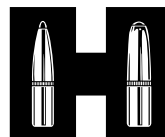


OWNER'S MANUAL
LOCK-N-LOAD®
RIFLE BULLET FEEDER
30 CAL
CONVERSION KIT



Hornady®
Accurate. Deadly. Dependable.

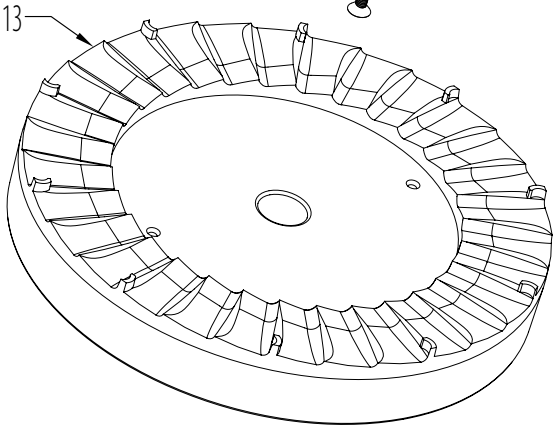
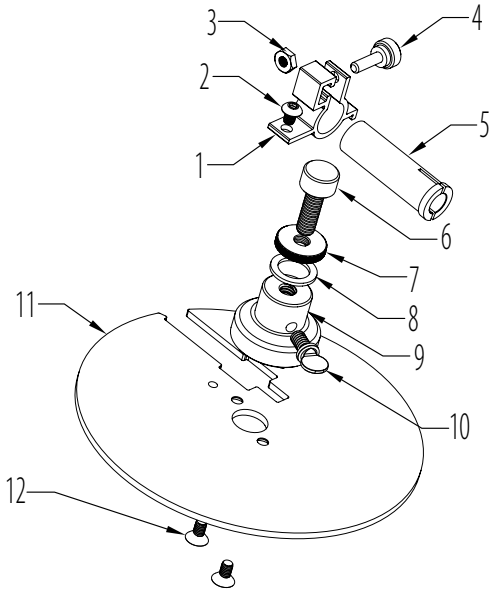
P.O. Box 1848, Grand Island, Nebraska 68802-1848
308-382-1390 • 800-338-3220 • Fax: 308-382-5761
www.hornady.com • Hornady.com/contact_us



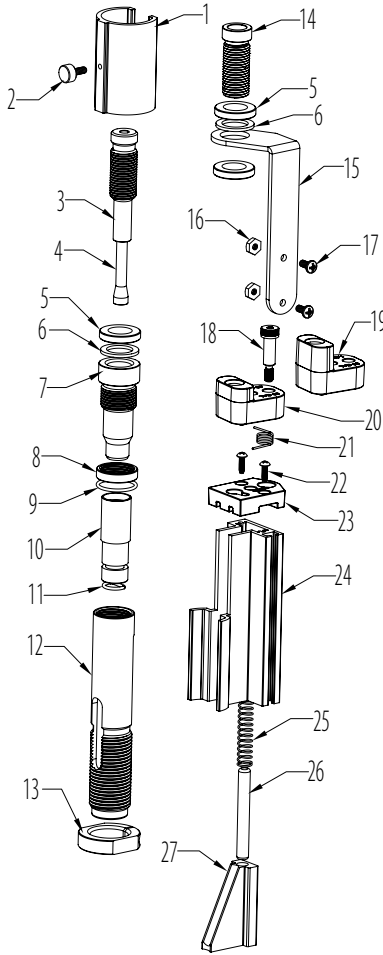
Hornady®
Accurate. Deadly. Dependable.

30 Cal. Feed Plate Conversion Kit

| Item No. | Part No. | Qty. | Description |
|----------|----------|------|---|
| 1 | 399213 | 1 | Tube Spring Clamp |
| 2 | 399210 | 1 | Button Head Cap Screw (BCHS), 10-32 x 1/4 |
| 3 | 392011 | 1 | Hex Nut, 10-32 |
| 4 | 399209 | 1 | Steel Knurled Thumb Screw |
| 5 | 399354 | 1 | Bullet Drop Funnel, 30 Cal. |
| 6 | 399205 | 1 | Screw Adjustment Bullet Feed |
| 7 | 399206 | 1 | Screw Lock Nut Adjustment |
| 8 | 398067 | 1 | Rubber Washer |
| 9 | 399208 | 1 | Center Plate Adjustment Nut |
| 10 | 398400 | 1 | Thumb Screw, 1/4-20 x 1 |
| 11 | 399356 | 1 | Hopper Turning Plate, 30 Cal. |
| 12 | 398401 | 2 | Flat Head Cap Screw (FHCS), 10-32 x 3/8 |
| 13 | 399352 | 1 | Bullet Feeder Wheel, 30 Cal. |

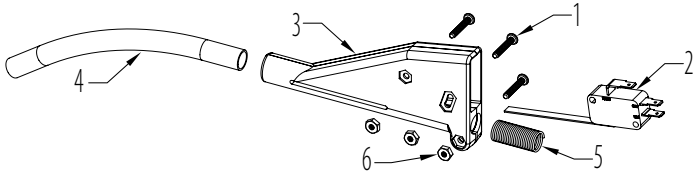


Rifle Bullet Feeder Die



| Item No. | Part No. | Qty. | Description |
|----------|----------|------|---------------------------------|
| 1 | 399327 | 1 | Feeder Clamp, RBF |
| 2 | 69006 | 1 | Thumb Screw, 6-32 x .40 |
| 3 | 399322 | 1 | Seat Adjust Screw, RBF |
| 4 | 399326 | 1 | Seating Stem, 30 Cal , RBF |
| 5 | 044800 | 3 | Seat Adjust Lock Ring |
| 6 | 398067 | 2 | Rubber Washer |
| 7 | 399320 | 1 | Crimp Adjust Screw, RBF |
| 8 | 398906 | 1 | Crimp Adjust Lock Ring |
| 9 | 480083 | 1 | Crimp Adjust Locking O-Ring |
| 10 | 399324 | 1 | 30 Cal Alignment Sleeve, RBF |
| 11 | 399371 | 1 | Bullet Retaining O-Ring, RBF |
| 12 | 399321 | 1 | Die Body, RBF |
| 13 | 044000 | 1 | Lock Ring |
| 14 | 399341 | 1 | Feed Tube Retainer, 30 Cal, RBF |
| 15 | 399339 | 1 | Feed Support Bracket, Black |
| 16 | 392452 | 2 | Hex Nut, 6-32 |
| 17 | 399340 | 2 | Pan Head Screw, 6-32 x 5/16 |
| 18 | 399336 | 1 | Shoulder Bolt, 1/4 x 5/8 10-24 |
| 19 | 399335 | 1 | Feed Block, 30 Cal Long |
| 20 | 399334 | 1 | Feed Block, 30 Cal Short |
| 21 | 399337 | 1 | Torsion Spring, 1/4" |
| 22 | 399167 | 2 | Pan Head Thread Cut, 4-40 x 3/8 |
| 23 | 399331 | 1 | Feeder Cap |
| 24 | 399328 | 1 | Feeder Body |
| 25 | 399338 | 1 | Compression Spring, 1/4" |
| 26 | 399330 | 1 | Dowel Pin, 1/4 x 2 |
| 27 | 399329 | 1 | Bullet Ramp |

Switch Retainer Assembly



| Item No. | Part No. | Qty. | Description |
|----------|----------|------|--------------------------------|
| 1 | 399347 | 3 | 4-40 x 11/16 Pan Head Screw |
| 2 | 399364 | 1 | Micro Switch (Cherry D42LR1XL) |
| 3 | 399345 | 1 | Switch Retainer, 30 Cal |
| 4 | 399344 | 1 | Feed Tube, 30 Cal |
| 5 | 399350 | 1 | Feed Spring, 30 Cal |
| 6 | 392458 | 3 | 4-40 Hex Nut |

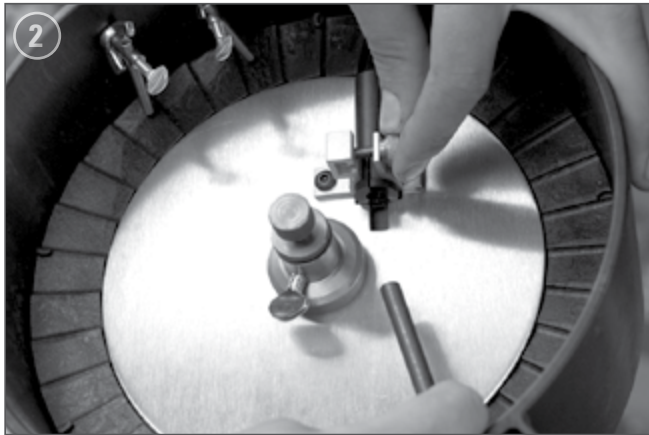
1 Remove 22 Caliber Bullet Feed Die

Remove the 22 caliber bullet feed die from your press. Remove any bullets from inside the die before storing it.

NOTE: If using the Lock-N-Load® bushing system, your die will be set for the next use.

2 Remove Feed Spring

Loosen the thumb screw to disconnect the 22 caliber feed spring from the drop funnel. Remove the 22 caliber feed spring and switch assembly.

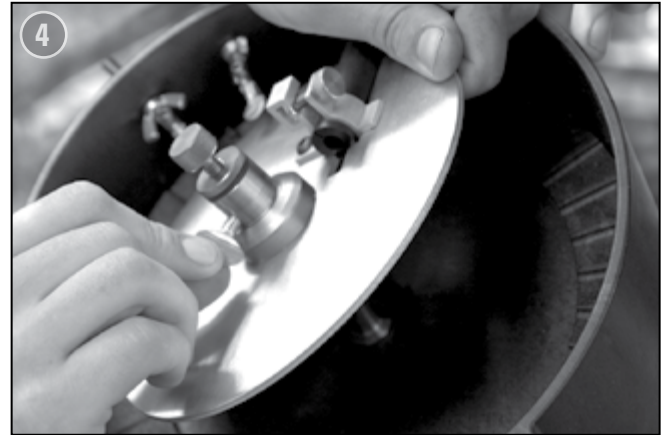


3 Empty 22 Caliber Bullets

Remove all bullets from the hopper.

4 Remove 22 Caliber Bullet Guide Plate

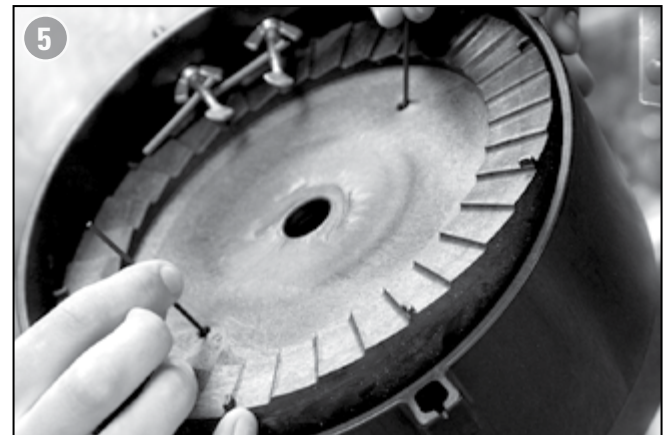
Loosen the thumb screw and slide the 22 caliber Bullet Guide Plate out of the hopper.



5 Remove 22 Caliber Feed Wheel

Rotate the wipers to the side and slide the 22 caliber Feed Wheel out of the hopper.

NOTE: Use two small hex wrenches or two ¼-20 bolts to lift the Feed Wheel out of the hopper.



6 Set Up 30 Caliber Feed Wheel

Place the 30 caliber Feed Wheel and 30 caliber Bullet Guide Plate in the hopper.



7 Set Up 30 Caliber System

Use the same steps found in the 22 caliber Rifle Bullet Feeder manual for further setup and adjustment.

*These instructions are also available online at hornady.com/manuals.

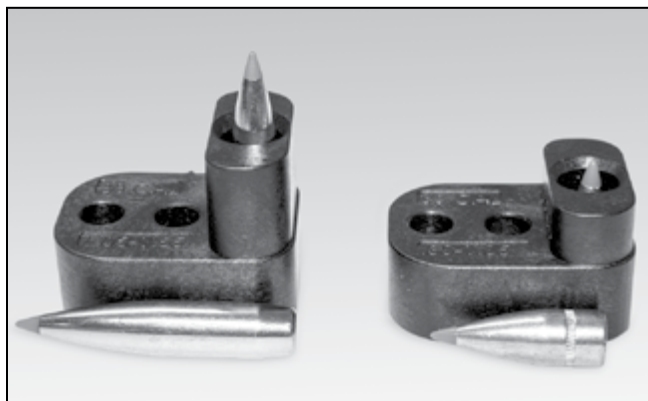
Keep in mind the following information:

Bullets

- Use pointed bullets (spire point, polymer tip, hollow point, etc.) **The rifle bullet feeder does not feed round nose or flat point bullets.**



- Bullet lengths from approximately .80" to 1.05" will use the short feed block. Bullet lengths from approximately 1.05" to 1.55" will use the tall feed block. **Do not use bullets outside this range.**



Case Lengths

- The 30 caliber rifle bullet feeder will feed, seat, and crimp rifle cases from 1.82" to 2.85" in length (300 Savage to 300 Rem Ultra Mag) in a Hornady® press.